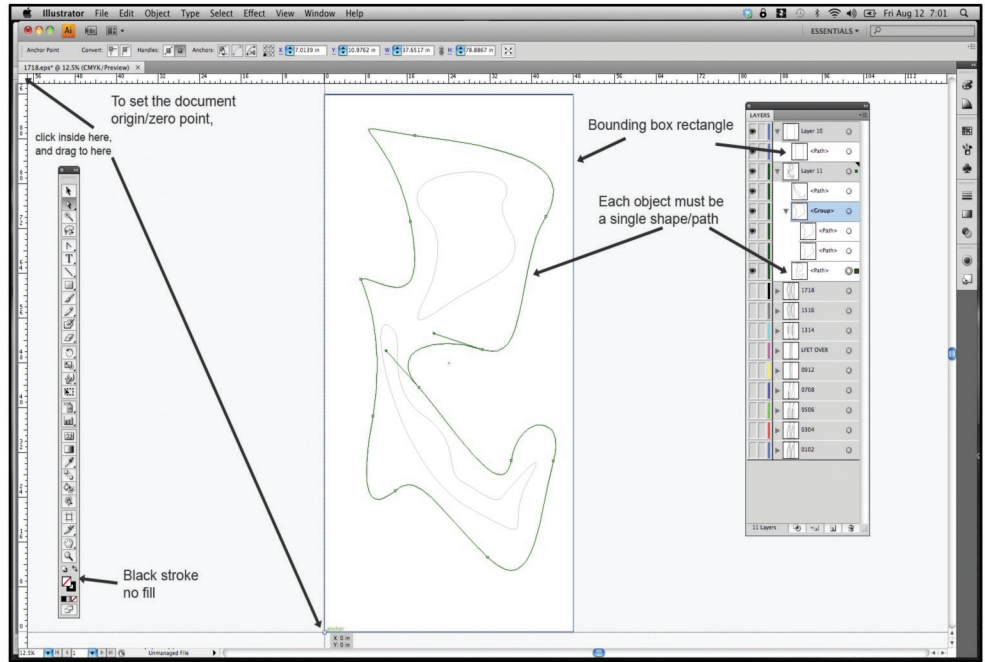


## Vector 2D profile cut set-up instructions.

In Illustrator (or equivalent) create a document the size of your material sheet, up to 48" wide and 96" tall, (portrait orientation)

On a separate layer create a bounding box/rectangle around the entire document.

In this area draw/import your shapes to be cut.

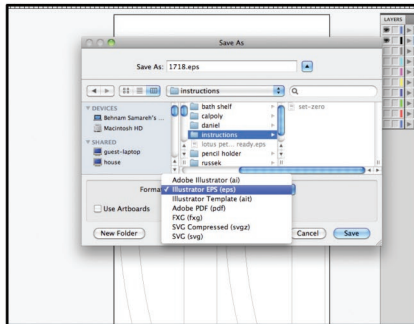


Make sure each shape is constructed of a single black line, 0.5 line weight, and outline only, NO FILL.

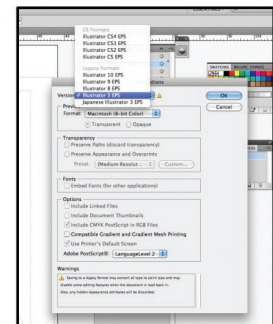
Make sure each shape is closed and is a single path (not a series of small segments)

Set the origin/zero point of the document to the lower left corner

Turn on only layers to be exported.



Go to file/save as.  
In the Format pop up select EPS  
Click save and set Version to  
"Illustrator 3 EPS"



Note:

At least 1/2" space between parts and 1" around perimeter.